

Aruba Wifi rješenja

Marko Ugrin

Direktor Razvoja, Integra Group d.o.o.



14. DAN INTEGRACIJE

UVIJEK POVEZANI

Zašto je bitan Wifi?

Novosti > Svijet

BALKANSKA POSLA

06.07.2017. | 18:04

Turisti iz pakla: nezadovoljni lošim WiFi-jem bijesni gosti uništili luksuznu vilu, cijeli inventar natopili maslinovim uljem

Muškarac iz SAD-a ubio brata zbog Wi-Fi signala

Piše: K.K.
četvrtak, 7.9.2017. 19:01

Podijeli 5

Tekst



Što tražimo od WiFi-a?

- Performanse
- Sigurnost
- Visoka dostupnost
- Fleksibilnost upravljanja
- VHD (very high density) okruženja
- Pametni dodatni servisi
- Integracija sa „ne-Wifi” komponentama sustava
- ...



AP - 802.11ac Wave2

- 802.11n → 802.11ac → 802.11ac Wave2

11n Initial APs

- 2 SS
- 40 MHz
- 64 QAM

11ac Wave 1 (Initial)

- 3 SS
- 80 MHz
- 256 QAM

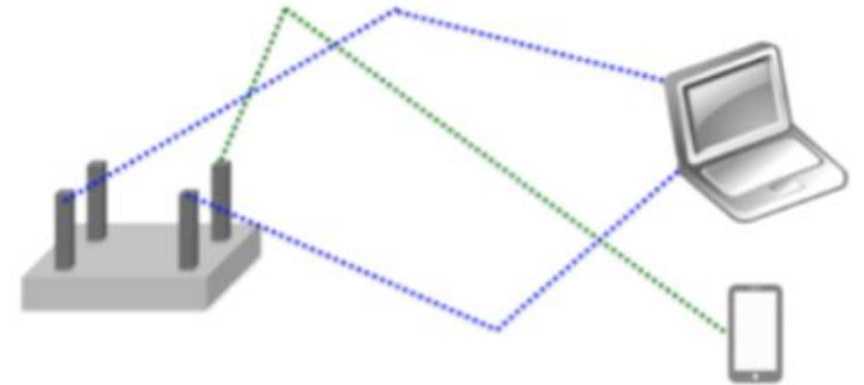


11n Mature

- **Up to 3 SS**
- 40 MHz
- 64 QAM

11ac Wave 2

- **Up to 4 SS**
- **Up to 160 MHz**
- 256 QAM
- **MU-MIMO**



AP - 802.11ac Wave2

- 802.11n → 802.11ac → 802.11ac Wave2

AP, Wave 2

- Adding **VHT160** and 2.5Gbps (Smart Rate) Ethernet
- Hitless POE failover, antenna polarization diversity (5GHz radio)

Dual radio, 802.11ac **4x4:4SS** VHT160 and integrated BLE

5GHz: 802.11ac 4x4:4SS **MU-MIMO**

- 1733 Mbps peak data rate, and up to 3 simultaneous MU-MIMO client devices

2.4GHz: 802.11n/ac 4x4:4SS

- 800 Mbps peak data rate (4SS/VHT40), 450Mbps at 3SS/HT40 and 144Mbps at 2SS/HT20



Upravljanje Wifi infrastrukturom

Controller Based

Centralized encryption/switching
Larger mobility domains

Same AP
hardware

Controllerless (Instant)

Many individual remote sites
One user interface per cluster

CONTROLLER

AirWave

INSTANT

Large sites, many branches
Multi-vendor controller and switch support
End to end diagnostics and health checks

Same
workflows

INSTANT

Central

Cloud-based management
Many independent branches



Upravljanje Wifi okolinom - Instant



VIRTUALIZED CONTROLLER

**Enterprise grade
and all inclusive**

BUILT-IN RF MANAGEMENT

- Adaptive Radio Management
- ClientMatch

BUILT-IN SECURITY

- Firewall/role-based access
- Intrusion prevention and detection
- App visibility and compliance

BUILT-IN RESILIENCY

- Site survivability
- Uplink redundancy



Upravljanje Wifi okolinom – Instant (2)



- First Access Point configured

Ready ...

- It becomes the “master” & performs firewall and controller functions

Set ...

- New APs automatically connect to the “master” & download configuration

Go!!

- ✓ NO ONSITE IT NEEDED
- ✓ NETWORK SURVIVABILITY



Kontroleri



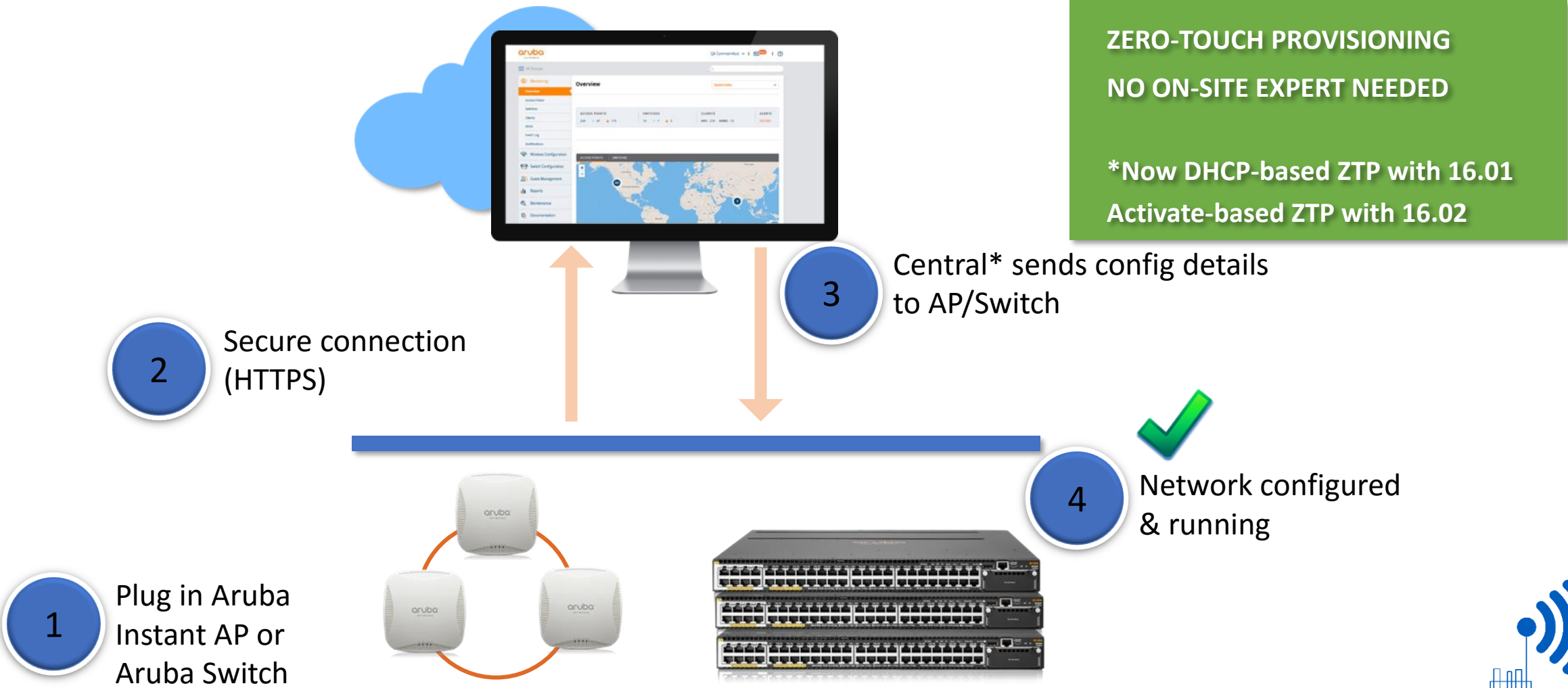
- Rapidly deploy to any location with zero touch
- Extend the digital experience to every branch office
- Optimize and secure apps while reducing cost

Features since 6.4.3

- | | |
|-------------------------|-----------------------------------|
| Zero touch provisioning | Secure, wired access |
| WAN opt. (compression) | Policy-based WAN routing |
| WAN survivability | Context based firewall |
| WAN health checks | 3 rd party integration |



Cloud based management – Central



Retail analytics– Central



How many passed by the entrance

How many entered

How many stayed

How long they stayed



Retail analytics - Central



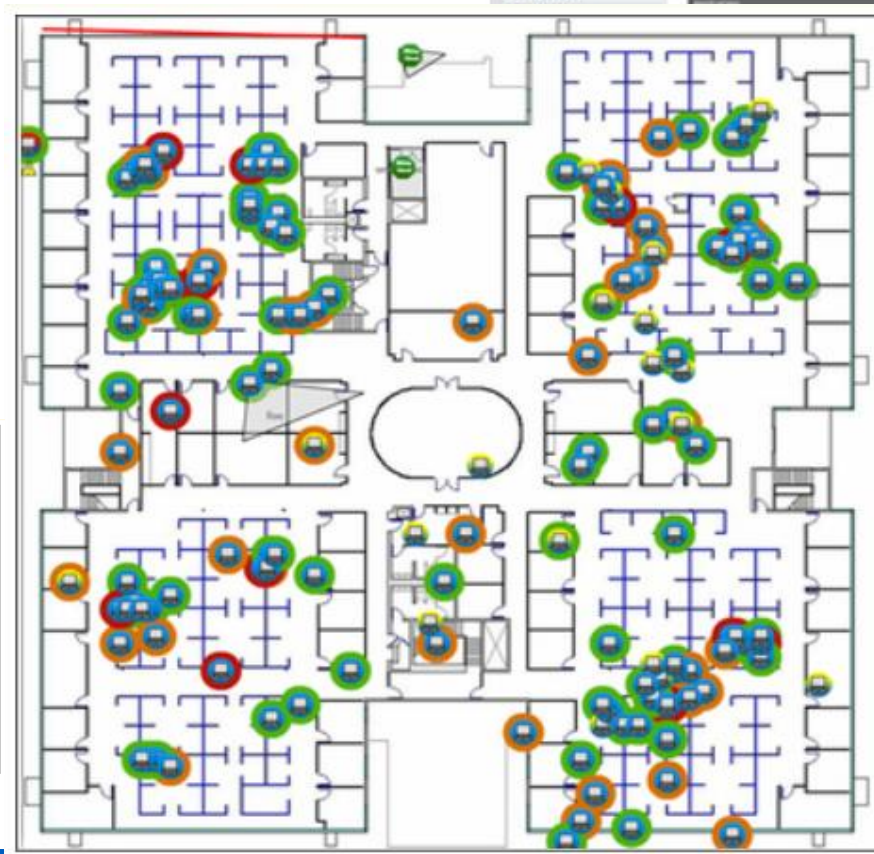
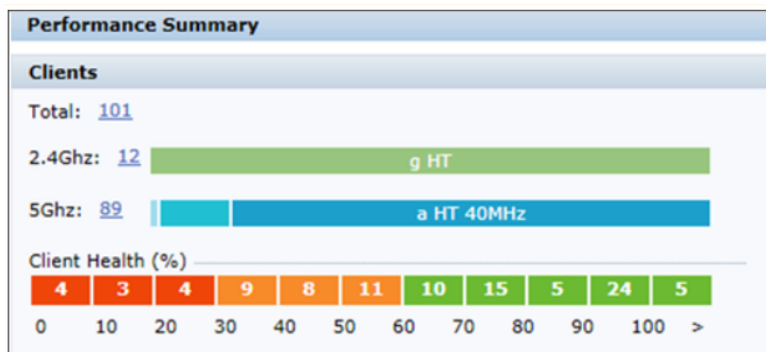
HOW IT WORKS

- Wi-Fi access points detect mobile device presence, count as user
 - *No additional hardware required!*
 - *No device connection required!*
- Based on signal strength, determine if user is outside or inside the store
 - *Customize RSSI threshold to measure conversion*
- Based on dwell time inside the store, measure customer engagement level
 - *Customize minimum time to measure engagement*

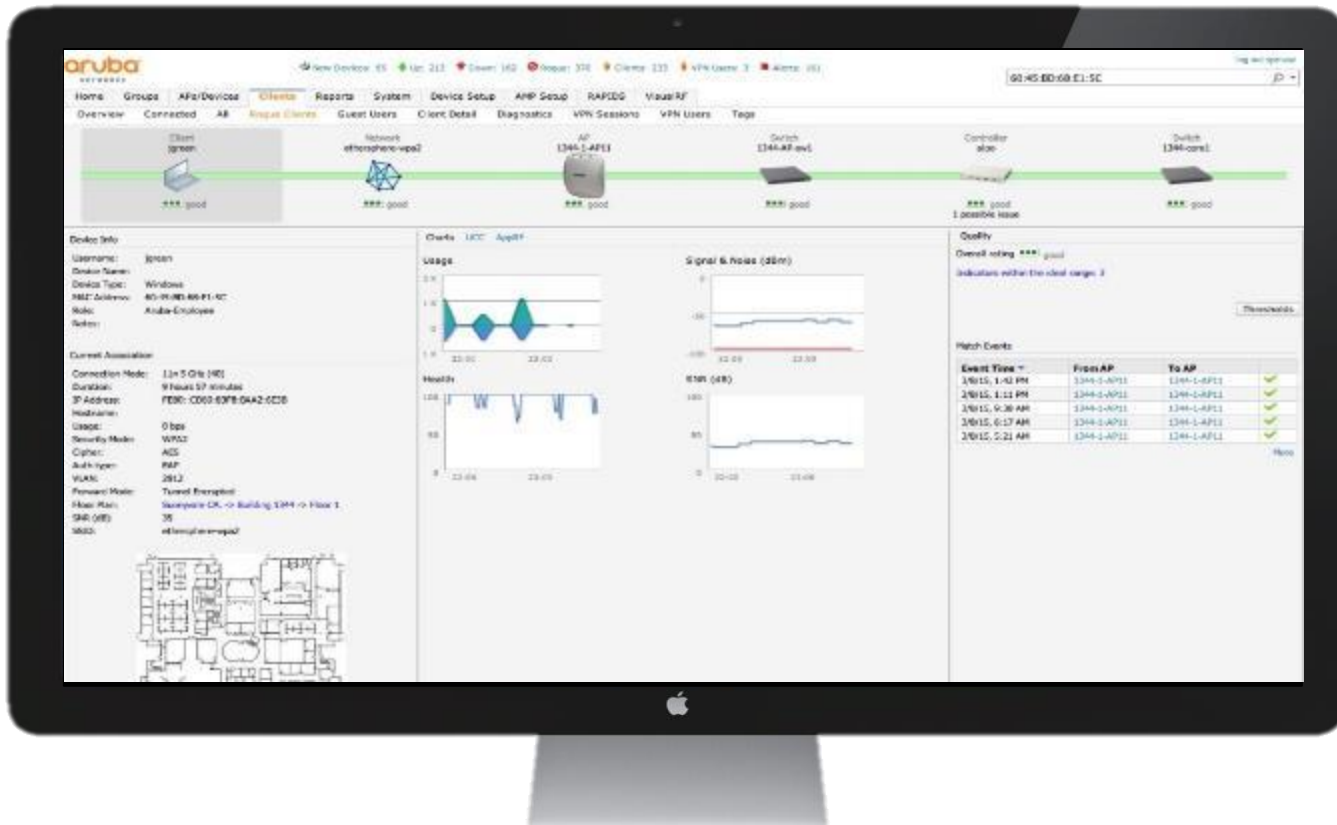


AirWave

- Multi Vendor management
- On premise
- Nadzor
- Upravljanje



AirWave



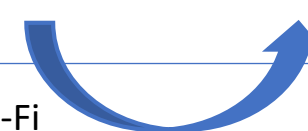
- PCI and Intrusion
- Monitoring
- RF Visualization
- Historical Reporting
- Configuration Management
- In-line Monitoring: RADIUS, DHCP, DNS critical services



Odabir načina upravljanja

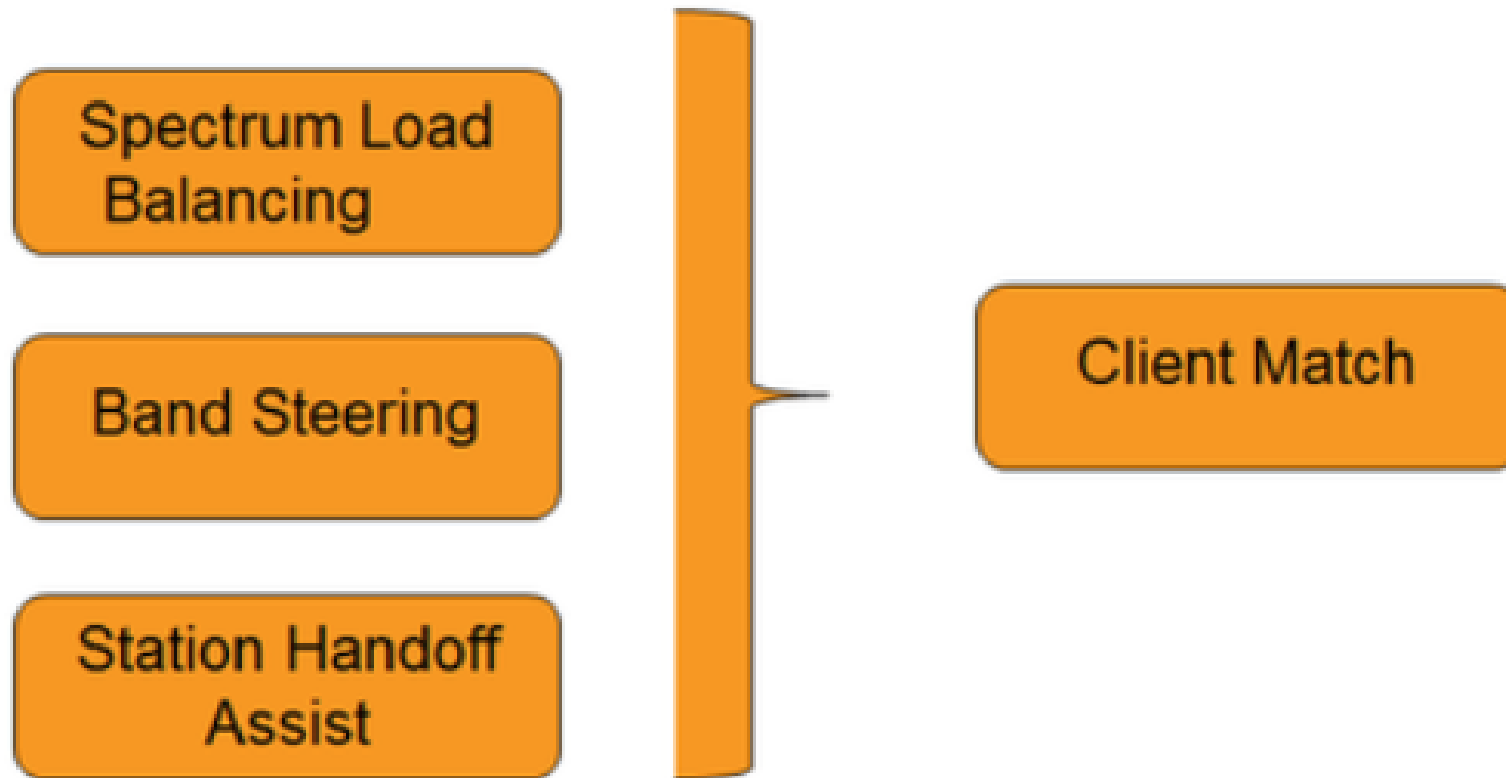


	Instant Local Management	Central	Airwave
Deployment	n/a	Cloud Management as a Service no hardware, no software	On-site
Management	Decentralized Instant Clusters	Centralized Management Instant APs, multiple sites, multiple clusters	Centralized Management Instant & ArubaOS APs, Third-Party Wired & WLAN
Advanced Capabilities	Simple Guest Wi-Fi	Guest/Visitor management with custom captive portal	VisualRF, advanced reporting alerts & customizations
Pricing	Free	No upfront costs Subscription per AP - 1/3/5yr Tech Support included	Lower recurring costs Perpetual SW license per AP/Switch + recurring annual maintenance + HW (optional)



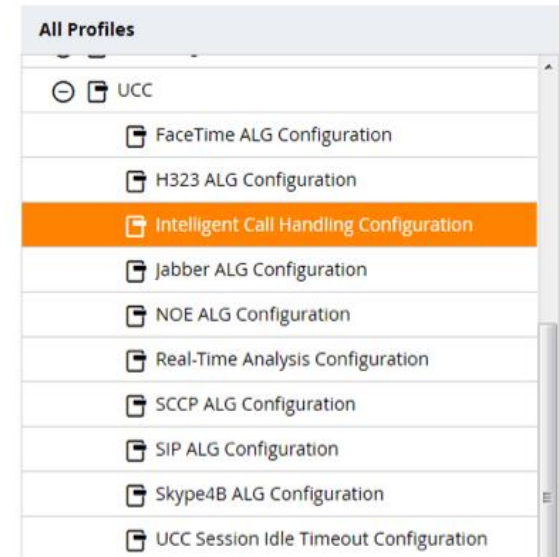
ClientMatch

- Navođenje klijenta na najbolji AP/radio



Awareness for Wi-Fi apps

- Custom AppRF definitions beyond the 2500 that's automatically identified by AOS
- Update signatures without an AOS upgrade
- Automatic classification, health metrics for Wi-Fi calling, Skype for Business, Apple Facetime, Cisco Jabber/Spark, and more



Intelligent traffic control



On-Board DPI

- Depth - common apps
- Enterprise traffic



Cloud-Based Web Policy Enforcement

- Breadth - less common apps
- Web traffic



GRANULAR VISIBILITY & CONTROL

- | | |
|---|-------------------------------------|
| <input type="checkbox"/> App category | <input type="checkbox"/> Allow/deny |
| <input type="checkbox"/> Individual app | <input type="checkbox"/> QoS |
| <input type="checkbox"/> Web category | <input type="checkbox"/> Throttle |
| <input type="checkbox"/> Web reputation | <input type="checkbox"/> Log |
| | <input type="checkbox"/> Blacklist |

- Prioritize business critical apps

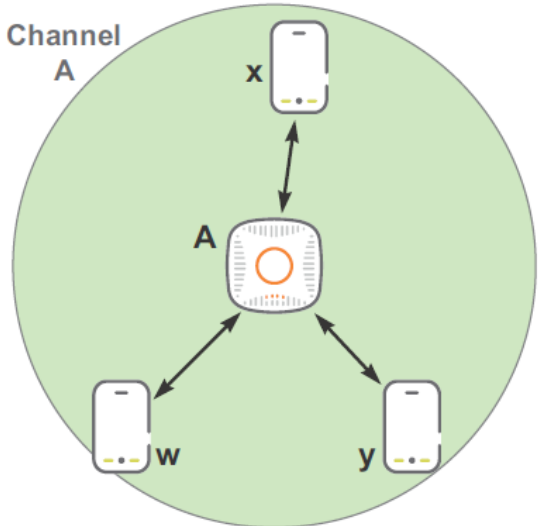
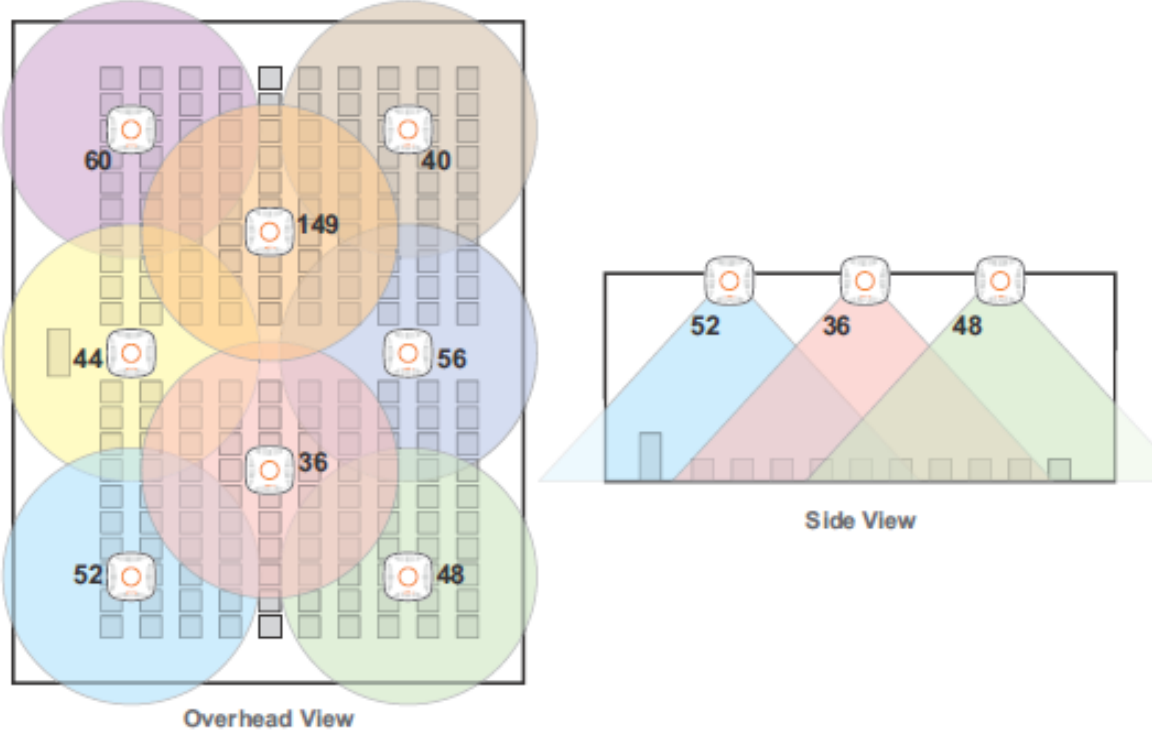


- Block inappropriate content

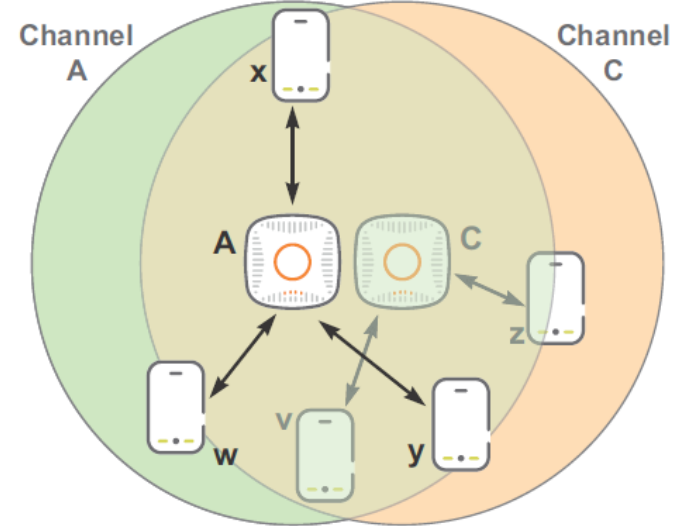
- Enforce per user/device/location



Scenarij velike gustoće klijenata



If one channel provides x Mbps capacity...

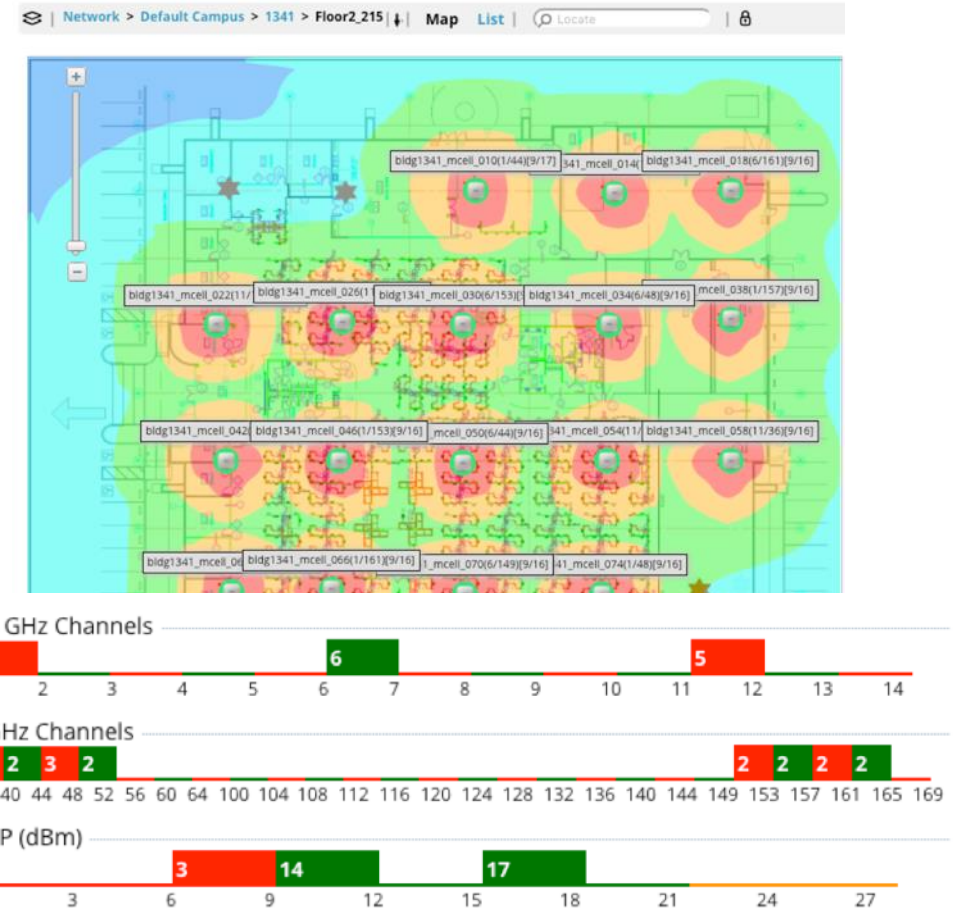


Two APs covering the same area on non-overlapping channels provide 2x Mbps capacity.



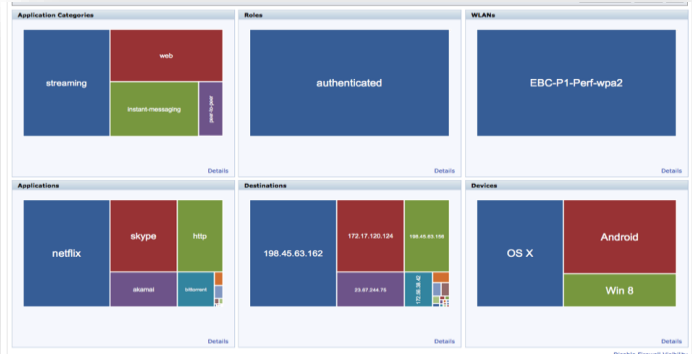
Automated high density RF

- Requires Mobility Master and AOS8
- Centralized RF automation for power, channel and channel width assignments
- Designed to achieve long term network stability and performance via machine learning
- RF settings are updated every 24 hours by default; frequency can be adjusted by IT



Scenarij velike gustoće klijenata

AppRF technology



Policy enforcement leveraging context

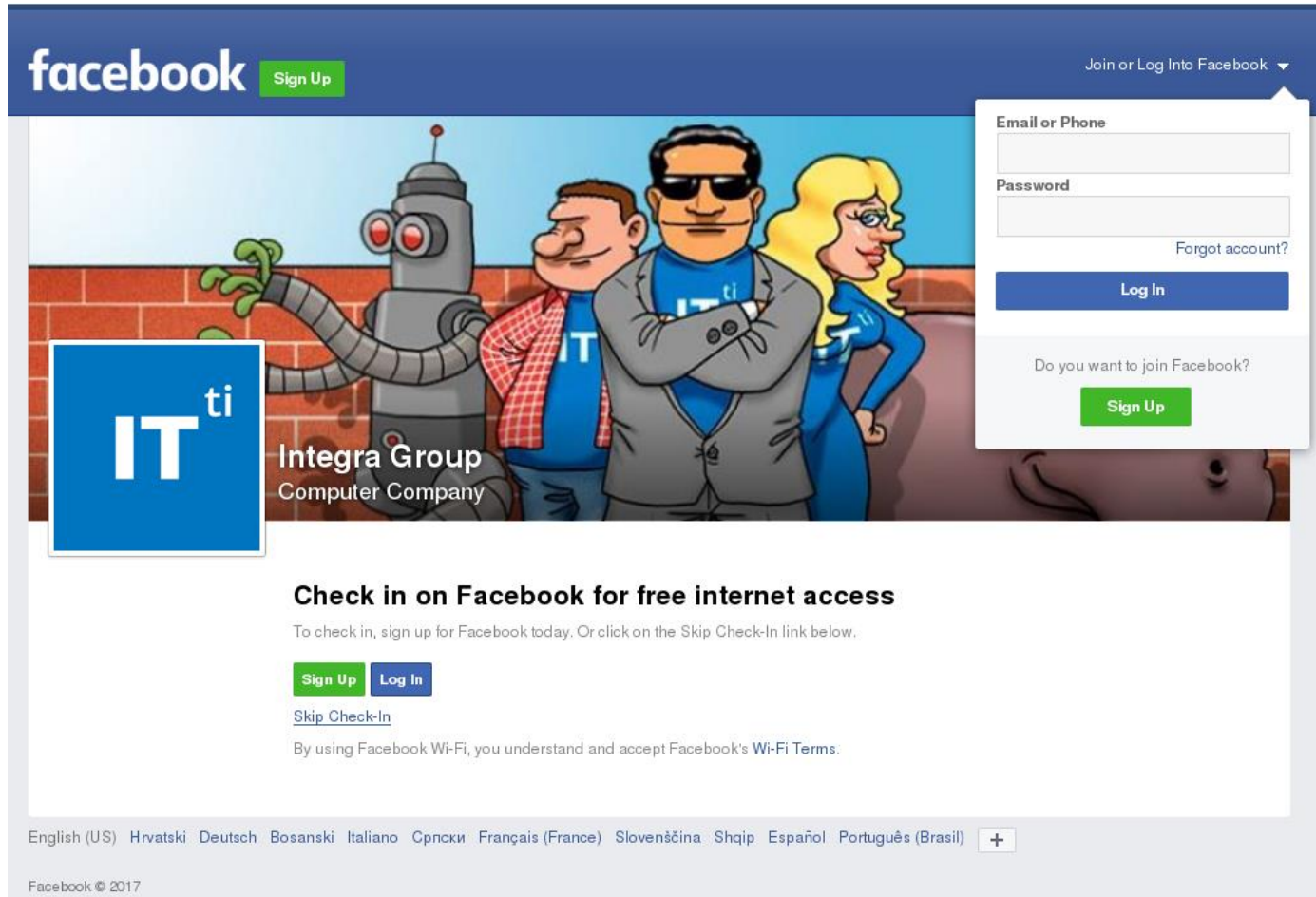
Real-time control of airtime



Protects 11ac mobile devices from older generation



Guest Management



facebook [Sign Up](#) Join or Log Into Facebook

Email or Phone

Password

[Forgot account?](#)

[Log In](#)

Do you want to join Facebook?
[Sign Up](#)

IT^{ti}
Integra Group
Computer Company

Check in on Facebook for free internet access
To check in, sign up for Facebook today. Or click on the Skip Check-In link below.

[Sign Up](#) [Log In](#)

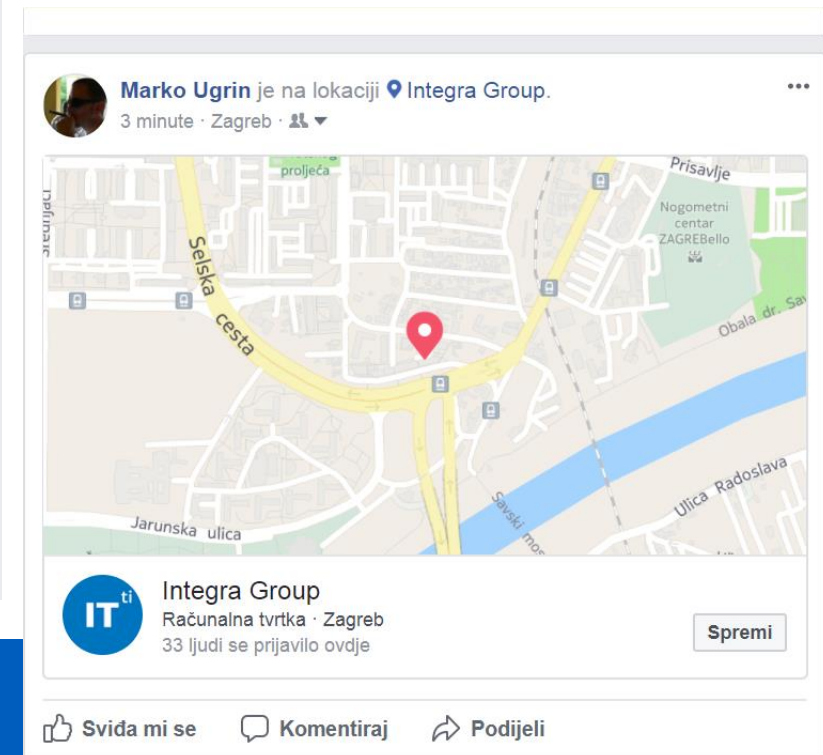
[Skip Check-In](#)

By using Facebook Wi-Fi, you understand and accept Facebook's Wi-Fi Terms.

English (US) Hrvatski Deutsch Bosanski Italiano Српски Français (France) Slovenščina Shqip Español Português (Brasil) +

Facebook © 2017

- Open guest network
- Simple Password sign in
- Captive Portal
- Facebook Wifi



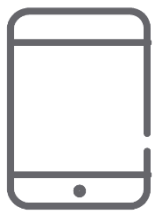
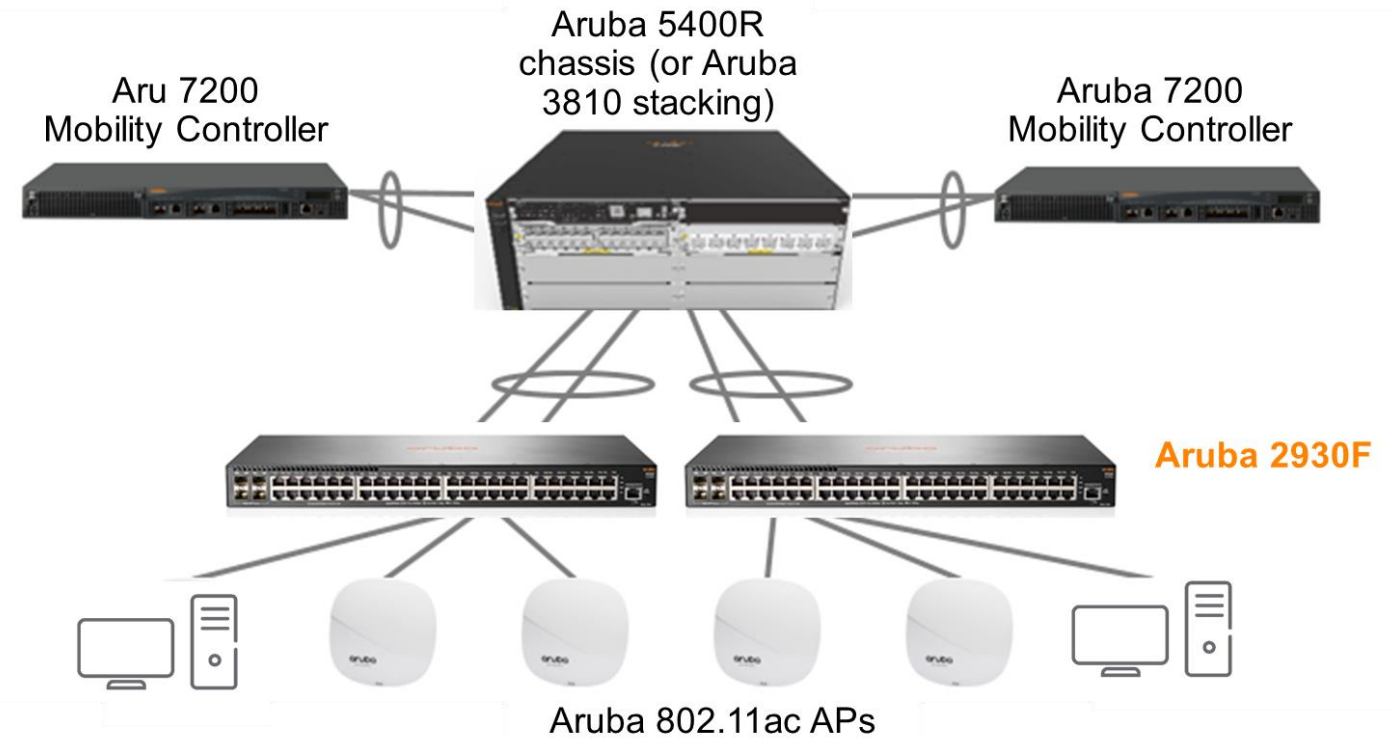
Marko Ugrin je na lokaciji [Integra Group](#).
3 minute · Zagreb · [👤](#)

IT^{ti} Integra Group
Računalna tvrtka · Zagreb
33 ljudi se prijavilo ovdje [Spremi](#)

[Svidi mi se](#) [Komentiraj](#) [Podijeli](#)

End-to-end arhitektura

- Visoka dostupnost
- Performanse
- Sigurnost



OfficeConnect OC20

Plug-and-play Wi-Fi for small business



Overview

- Right sized for small business – 2x2 dual radio 802.11ac Wave1
- Clustering of up to 8 Access Points – ideal for a small business
- Fast ultra-simple set-up via mobile app
- Remote monitoring of network from anywhere

Benefits

- Create secure employee and guest Wi-Fi networks in minutes
- Easy guests access using Facebook Wi-Fi log-in
- Reliable connectivity to support business critical applications
- Keep business and customer traffic separate and secure
- Set guidelines to protect your business from on-line threats
- Engage and encourage customers to stay longer with guest Wi-Fi



integra^egroup

www.integrargroup.hr

14. DAN INTEGRACIJE

UVIJEK POVEZANI

